

Part Number	Hex A/F inch	Hex A/F mm	Hex A/C Min inch/mm	OD inch/mm	Length inch/mm
TDH-3-12	.181/.183	4.597/4.648	.206/5.23	1.250/31.75	.750/19.05
TDH-4-12	.244/.246	6.20/6.25	.278/7.06	1.250/31.75	.750/19.05
TDH-5-12	.305/.307	7.745/7.80	.347/8.81	1.250/31.75	.750/19.05
TDH-6-12	.367/.369	9.32/9.37	.416/10.57	1.250/31.75	.750/19.05
TDH-7-12	.428/.430	10.88/10.92	.488/12.40	1.250/31.75	.750/19.05
TDH-8-12	.489/.491	12.42/12.47	.557/14.15	1.250/31.75	.750/19.05
TDH-9-12	.551/.553	14.00/14.05	.628/15.95	1.250/31.75	.750/19.05
TDH-10-12	.612/.614	15.54/15.60	.698/17.73	1.250/31.75	.750/19.05

Part Number	Hex A/F inch	Hex A/F mm	Hex A/C Min inch/mm	OD inch/mm	Length inch/mm
TDH-3-14	.181/.183	4.60/4.65	.206/5.23	1.437/36.50	.940/23.88
TDH-4-14	.244/.246	6.20/6.25	.278/7.06	1.437/36.50	.940/23.88
TDH-5-14	.305/.307	7.75/7.80	.347/8.81	1.437/36.50	.940/23.88
TDH-6-14	.367/.369	9.32/9.37	.416/10.57	1.437/36.50	.940/23.88
TDH-7-14	.428/.430	10.88/10.92	.488/12.40	1.437/36.50	.940/23.88
TDH-8-14	.489/.491	12.42/12.47	.557/14.15	1.437/36.50	.940/23.88
TDH-9-14	.551/.553	14.00/14.05	.628/15.95	1.437/36.50	.940/23.88
TDH-10-14	.612/.614	15.54/15.60	.698/17.73	1.437/36.50	.940/23.88
TDH-11-14	.674/.676	17.12/17.17	.768/19.51	1.437/36.50	.940/23.88
TDH-12-14	.736/.738	18.69/18.75	.840/21.34	1.437/36.50	.940/23.88

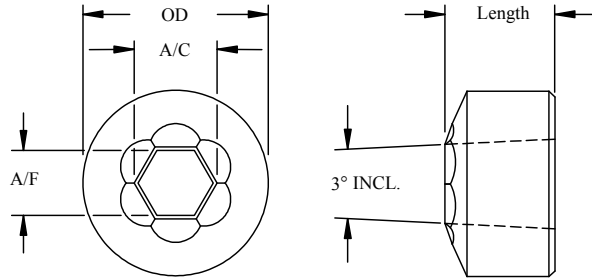
Part Number	Hex A/F inch	Hex A/F mm	Hex A/C Min inch/mm	OD inch/mm	Length inch/mm
TDH-10-17	.612/.614	15.55/15.60	.698/17.73	1.750/44.45	.940/23.88
TDH-11-17	.674/.676	17.12/17.17	.768/19.51	1.750/44.45	.940/23.88
TDH-12-17	.736/.738	18.69/18.75	.840/21.34	1.750/44.45	.940/23.88
TDH-13-17	.798/.800	20.27/20.32	.910/23.11	1.750/44.45	.940/23.88
TDH-14-17	.860/.862	21.84/21.89	.969/24.61	1.750/44.45	.940/23.88

1. Trim die material:

- M2 at RC 62-64
- M4 at RC 62-64

2. Special shapes (Round, Square, 12 Point, etc.) also available per quote.

3. PVD and CVD coatings available.



Part Number	Hex A/F inch	Hex A/F mm	Hex A/C Min inch/mm	OD inch/mm	Length inch/mm
TDH-7MM-12	.268/.270	6.81/6.86	.300/7.62	1.250/31.75	.750/19.05
TDH-8MM-12	.307/.309	7.80/7.85	.346/8.79	1.250/31.75	.750/19.05
TDH-10MM-12	.386/.388	9.80/9.85	.435/11.05	1.250/31.75	.750/19.05
TDH-11MM-12	.426/.428	10.82/10.87	.478/12.14	1.250/31.75	.750/19.05
TDH-12MM-12	.465/.467	11.81/11.86	.521/13.23	1.250/31.75	.750/19.05
TDH-13MM-12	.502/.504	12.75/12.80	.566/14.38	1.250/31.75	.750/19.05

Part Number	Hex A/F inch	Hex A/F mm	Hex A/C Min inch/mm	OD inch/mm	Length inch/mm
TDH-5MM-14	.190/.192	4.83/4.88	.210/5.33	1.437/36.50	.940/23.88
TDH-6MM-14	.230/.232	5.84/5.89	.256/6.50	1.437/36.50	.940/23.88
TDH-7MM-14	.268/.270	6.81/6.86	.300/7.62	1.437/36.50	.940/23.88
TDH-8MM-14	.307/.309	7.80/7.85	.346/8.79	1.437/36.50	.940/23.88
TDH-10MM-14	.386/.388	9.80/9.85	.435/11.05	1.437/36.50	.940/23.88
TDH-11MM-14	.426/.428	10.82/10.87	.478/12.14	1.437/36.50	.940/23.88
TDH-12MM-14	.465/.467	11.81/11.86	.521/13.23	1.437/36.50	.940/23.88
TDH-13MM-14	.502/.504	12.75/12.80	.566/14.38	1.437/36.50	.940/23.88
TDH-15MM-14	.583/.585	14.81/14.86	.659/16.74	1.437/36.50	.940/23.88
TDH-17MM-14	.661/.663	16.79/16.84	.749/19.02	1.437/36.50	.940/23.88
TDH-19MM-14	.735/.737	18.67/18.72	.835/21.21	1.437/36.50	.940/23.88

Part Number	Hex A/F inch	Hex A/F mm	Hex A/C Min inch/mm	OD inch/mm	Length inch/mm
TDH-15MM-17	.583/.585	14.81/14.86	.659/16.74	1.750/44.45	.940/23.88
TDH-17MM-17	.661/.663	16.79/16.84	.749/19.02	1.750/44.45	.940/23.88
TDH-19MM-17	.735/.737	18.67/18.72	.835/21.21	1.750/44.45	.940/23.88

1. Trim die material:

- M2 at RC 62-64
- M4 at RC 62-64

2. Special shapes (Round, Square, 12 Point, etc.) also available per quote.

3. PVD and CVD coatings available.